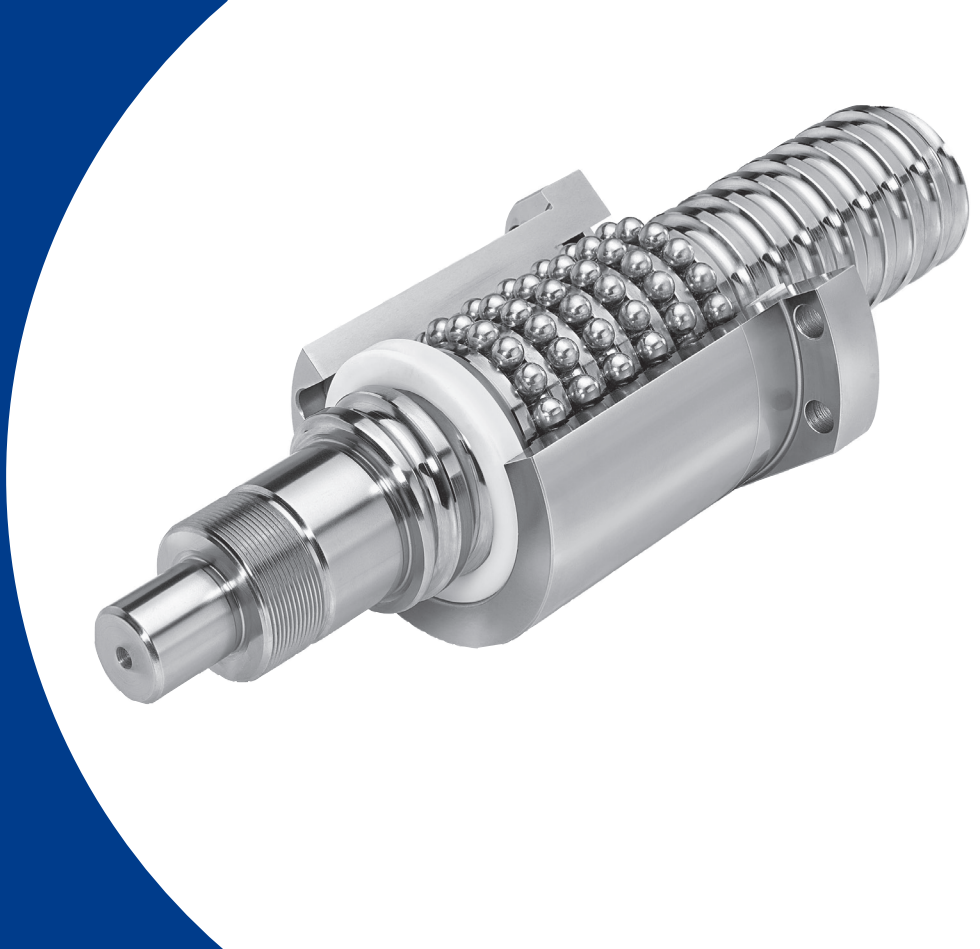


*“Part of your drive”*

## **GROUND BALLSCREWS**

**STOCK CATALOGUE**

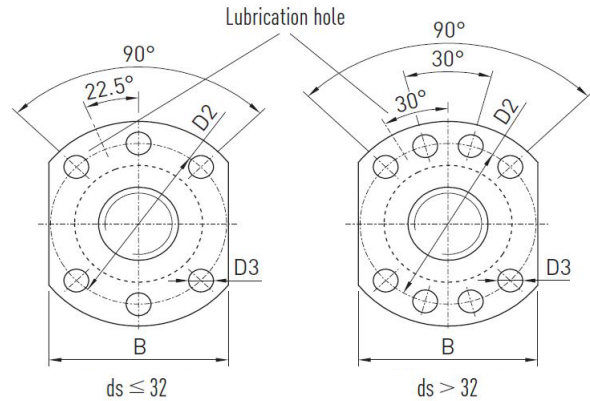
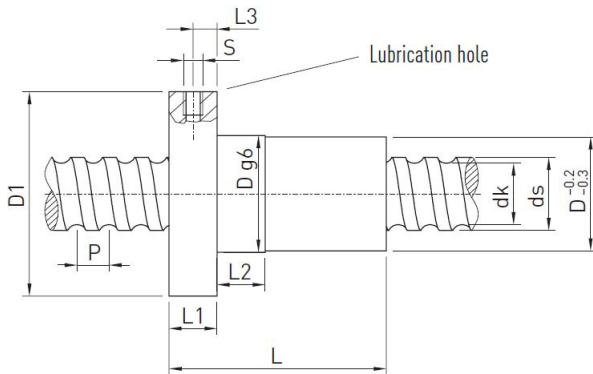
**EDITION 02**





# DIN 69051 Part 5 Form B

## Ground Ballscrews – Single Nuts



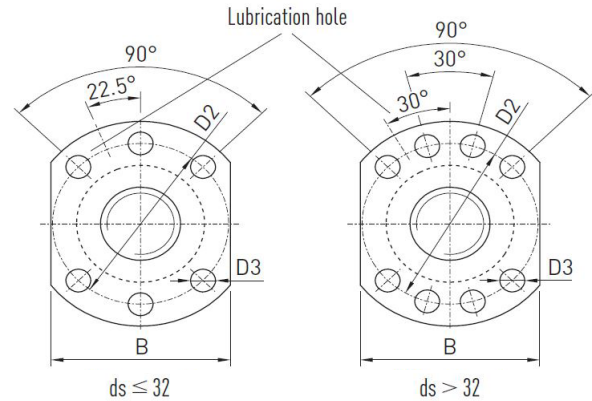
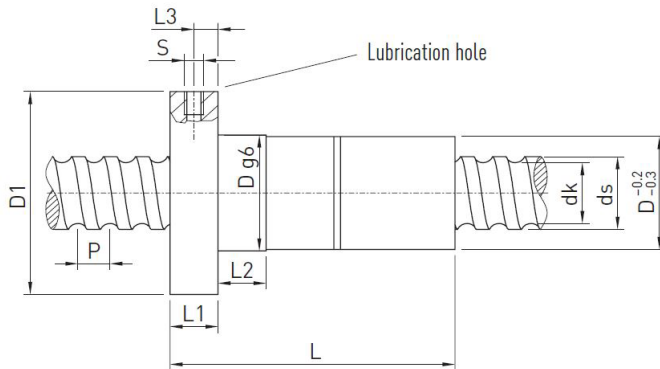
Part Number	ds	P	Ø Ball	D	D1	D2	D3	L	L1	L2	L3	S	B	dk	Rigidity (N/µm)	Dyn (kN)	Stat (kN)
R16-16K2-FSC	16	16	3.175	34	57	45	5.5	47	10	10	5	M5	43	13.124	170	6.8	13.8
R20-5K4-FSC	20	5	3.175	36	58	47	6.6	40	10	10	5	M6	44	17.324	420	14.9	36.4
R20-10K3-FSC	20	10	3.175	36	58	47	6.6	47	10	10	5	M6	44	17.324	320	11.3	26.6
R20-20K2-FSC	20	20	3.175	36	58	47	6.6	57	10	10	5	M6	44	17.324	210	7.6	17.3
R25-5K4-FSC	25	5	3.175	40	62	51	6.6	43	10	10	5	M6	48	22.324	490	16.5	46.1
R25-10K3-FSC	25	10	3.175	40	62	51	6.6	50	10	10	5	M6	48	22.324	380	12.6	33.7
R25-10K4-FSC	25	10	3.969	45	65	54	6.6	60	10	10	5	M6	51	21.744	560	22.1	56.6
R25-20K3-FSC	25	20	3.175	40	62	51	6.6	80	10	10	5	M6	48	22.324	390	12.6	34.3
R25-20K3-FSC	25	20	3.969	45	65	54	6.6	80	10	10	5	M6	51	21.744	430	17.1	42.9
R25-25K2-FSC	25	25	3.175	40	62	51	6.6	69	10	10	5	M6	48	22.324	250	8.4	21.7
R32-5K4-FSC	32	5	3.175	48	70	59	6.6	38	12	10	6	M6	54	29.324	570	18.4	59.6
R32-10K5-FSC	32	10	3.969	50	80	65	9.0	73	12	10	6	M6	62	28.744	850	30.8	94.5
R32-10K5-FSC	32	10	4.763	56	86	71	9.0	79	14	10	7	M6	65	28.132	860	38.5	108.9
R32-10K5-FSC	32	10	6.350	62	92	77	9.0	77	14	10	7	M6	74	26.910	900	56.4	144.8
R32-20K3-FSC	32	20	3.969	50	80	65	9.0	87	12	20	6	M6	62	28.744	520	19.0	54.3
R32-20K4-FSC	32	20	4.763	54	86	71	9.0	106	14	20	7	M6	65	28.744	720	31.9	89.1
R32-20K4-FSC	32	20	6.350	62	92	77	9.0	107	14	20	7	M6	74	26.910	700	42.4	108.5
R32-32K2-FSC	32	32	3.969	50	80	65	9.0	87	12	20	6	M6	62	28.744	340	12.8	35.3
R32-40K2-FSC	32	40	3.969	50	80	65	9.0	94	12	20	6	M6	62	28.744	320	12.4	34.4
R40-5K5-FSC	40	5	3.175	63	93	78	9.0	45	14	20	7	M8x1	70	37.324	850	24.7	94.9
R40-10K5-FSC	40	10	6.350	70	100	85	9.0	83	14	20	7	M8x1	75	34.910	1060	63.4	184.0
R40-20K4-FSC	40	20	6.350	70	100	85	9.0	110	14	20	7	M8x1	75	34.910	870	51.3	144.4
R40-40K2-FSC	40	40	6.350	70	100	85	9.0	101	14	25	7	M8x1	75	34.910	420	26.6	69.4
R50-5K5-FSC	50	5	3.175	70	100	85	11.0	45	16	20	8	M8x1	75	47.324	950	27.0	119.4
R50-10K5-FSC	50	10	6.350	82	118	100	11.0	80	16	25	8	M8x1	92	44.910	1250	70.5	233.0
R50-20K4-FSC	50	20	6.350	82	118	100	11.0	106	16	25	8	M8x1	92	44.910	1040	57.2	183.4
R50-20K4-FSC	50	20	9.525	86	121	103	11.0	120	16	25	8	M8x1	95	42.466	1130	98.7	274.2
R50-40K3-FSC	50	40	6.350	82	118	100	11.0	145	16	25	8	M8x1	92	44.910	790	43.9	137.5
R63-10K5-FSC	63	10	6.350	95	135	115	13.5	84	20	25	10	M8x1	100	57.910	1440	77.2	291.9
R63-20K5-FSC	63	20	6.350	95	135	115	13.5	132	20	25	10	M8x1	100	57.910	1570	78.5	300.2
R63-20K5-FSC	63	20	9.525	107	147	127	13.5	140	20	25	10	M8x1	112	55.466	1680	134.3	435.3
R63-40K2-FSC	63	40	6.350	95	135	115	13.5	110	20	25	10	M8x1	100	57.910	620	33.1	111.0
R80-10K5-FSC	80	10	6.350	110	150	130	13.5	80	25	25	12.5	M8x1	115	74.910	1660	86.2	379.8
R80-20K4-FSC	80	20	9.525	120	165	145	13.5	122	25	25	12.5	M8x1	130	72.466	1660	124.0	449.1

ALL GROUND BALLSCREW ASSEMBLIES ARE PAIRED WITH RUN OUT REPORTS  
STANDARD RANGE OF BALLSCREW NUTS SHOWN ABOVE, SPECIALS ON REQUEST



# DIN 69051 Part 5 Form B

## Ground Ballscrews – Double Nuts



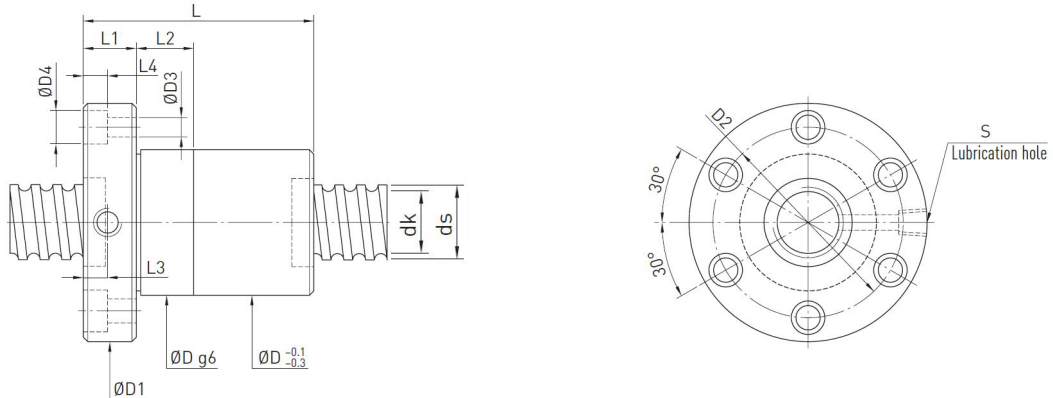
Part Number	ds	P	Ø Ball	D	D1	D2	D3	L	L1	L2	L3	S	B	dk	Rigidity (N/µm)	Dyn (kN)	Stat (kN)
R16-16K2-FDC	16	16	3.175	34	57	45	5.5	98	10	10	5	M5	43	13.124	230	6.8	13.8
R20-5K4-FDC	20	5	3.175	36	58	47	6.6	84	10	10	5	M6	44	17.324	550	14.9	36.4
R20-10K3-FDC	20	10	3.175	36	58	47	6.6	98	10	10	5	M6	44	17.324	420	11.3	26.6
R20-20K2-FDC	20	20	3.175	36	58	47	6.6	116	10	10	5	M6	44	17.324	270	7.6	17.3
R25-5K4-FDC	25	5	3.175	40	62	51	6.6	90	10	10	5	M6	48	22.324	650	16.5	46.1
R25-10K3-FDC	25	10	3.175	40	62	51	6.6	104	10	10	5	M6	48	22.324	500	12.6	33.7
R25-10K4-FDC	25	10	3.969	45	65	54	6.6	124	10	10	5	M6	51	21.744	740	22.1	56.6
R25-20K3-FDC	25	20	3.175	40	62	51	6.6	164	10	10	5	M6	48	22.324	510	12.6	34.3
R25-20K3-FDC	25	20	3.969	45	65	54	6.6	164	10	10	5	M6	51	21.744	550	17.1	42.9
R25-25K2-FDC	25	25	3.175	40	62	51	6.6	142	10	10	5	M6	48	22.324	320	8.4	21.7
R32-5K4-FDC	32	5	3.175	48	70	59	6.6	80	12	10	6	M6	54	29.324	770	18.4	59.6
R32-10K5-FDC	32	10	3.969	50	80	65	9.0	150	12	10	6	M6	62	28.744	1130	30.8	94.5
R32-10K5-FDC	32	10	4.763	56	86	71	9.0	162	14	10	7	M6	65	28.132	1130	38.5	108.9
R32-10K5-FDC	32	10	6.350	62	92	77	9.0	158	14	10	7	M6	74	26.910	1190	56.4	144.8
R32-20K3-FDC	32	20	3.969	50	80	65	9.0	178	12	20	6	M6	62	28.744	680	19.0	54.3
R32-20K4-FDC	32	20	4.763	54	86	71	9.0	216	14	20	7	M6	65	28.744	940	31.9	89.1
R32-20K4-FDC	32	20	6.350	62	92	77	9.0	218	14	20	7	M6	74	26.910	710	42.4	108.5
R32-32K2-FDC	32	32	3.969	50	80	65	9.0	178	12	20	6	M6	62	28.744	440	12.8	35.3
R32-40K2-FDC	32	40	3.969	50	80	65	9.0	192	12	20	6	M6	62	28.744	420	12.4	34.4
R40-5K5-FDC	40	5	3.175	63	93	78	9.0	95	14	20	7	M8x1	70	37.324	1140	24.7	94.9
R40-10K5-FDC	40	10	6.350	70	100	85	9.0	171	14	20	7	M8x1	75	34.910	1410	63.4	184.0
R40-20K4-FDC	40	20	6.350	70	100	85	9.0	225	14	20	7	M8x1	75	34.910	1150	51.3	144.4
R40-40K2-FDC	40	40	6.350	70	100	85	9.0	207	14	25	7	M8x1	75	34.910	560	26.6	69.4
R50-5K5-FDC	50	5	3.175	70	100	85	11.0	95	16	20	8	M8x1	75	47.324	1290	27.0	119.4
R50-10K5-FDC	50	10	6.350	82	118	100	11.0	166	16	25	8	M8x1	92	44.910	1660	70.5	233.0
R50-20K4-FDC	50	20	6.350	82	118	100	11.0	218	16	25	8	M8x1	92	44.910	1380	57.2	183.4
R50-20K4-FDC	50	20	9.525	86	121	103	11.0	245	16	25	8	M8x1	95	42.466	1490	98.7	274.2
R50-40K3-FDC	50	40	6.350	82	118	100	11.0	295	16	25	8	M8x1	92	44.910	1040	43.9	137.5
R63-10K5-FDC	63	10	6.350	95	135	115	13.5	174	20	25	10	M8x1	100	57.910	1920	77.2	291.9
R63-20K5-FDC	63	20	6.350	95	135	115	13.5	270	20	25	10	M8x1	100	57.910	2080	78.5	300.2
R63-20K5-FDC	63	20	9.525	107	147	127	13.5	286	20	25	10	M8x1	112	55.466	2220	134.3	435.3
R63-40K2-FDC	63	40	6.350	95	135	115	13.5	226	20	25	10	M8x1	100	57.910	820	33.1	111.0
R80-10K5-FDC	80	10	6.350	110	150	130	13.5	170	25	25	12.5	M8x1	115	74.910	2230	86.2	379.8
R80-20K4-FDC	80	20	9.525	120	165	145	13.5	250	25	25	12.5	M8x1	130	72.466	2120	124.0	449.1

ALL GROUND BALLSCREW ASSEMBLIES ARE PAIRED WITH RUN OUT REPORTS  
STANDARD RANGE OF BALLSCREW NUTS SHOWN ABOVE, SPECIALS ON REQUEST



# Full Round Flange

## Ground Ballscrews – Single Nuts



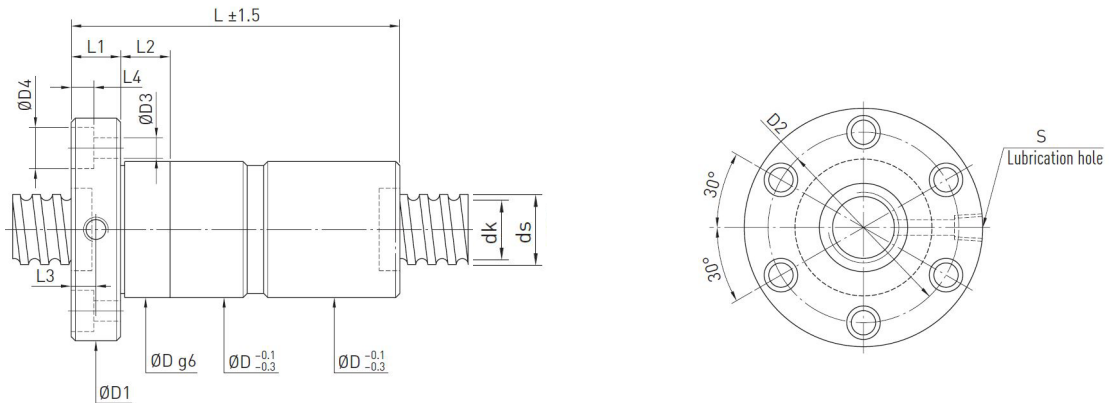
Part Number	ds	P	Ø Ball	D	D1	D2	D3	D4	L	L1	L2	L3	L4	S	dk	Rigidity (N/µm)	Dyn (kN)	Stat (kN)
R16-5T3-FSI	16	5	3.175	30	54	41	5.5	9.5	46	12	12	6	5.5	M6	13.324	110	7.31	13.31
R16-5T4-FSI	16	5	3.175	30	54	41	5.5	9.5	52	12	12	6	5.5	M6	13.324	120	9.36	17.75
R20-5T3-FSI	20	5	3.175	34	57	45	5.5	9.5	46	12	12	6	5.5	M6	17.324	200	8.52	17.67
R20-5T4-FSI	20	5	3.175	34	57	45	5.5	9.5	53	12	12	6	5.5	M6	17.324	270	10.91	23.56
R25-5T3-FSI	25	5	3.175	40	64	51	5.5	9.5	46	11	10	5.5	5.5	M6	22.324	280	9.77	23.14
R25-5T4-FSI	25	5	3.175	40	64	51	5.5	9.5	51	11	10	5.5	5.5	M6	22.324	370	12.52	30.85
R25-5T5-FSI	25	5	3.175	40	63	51	5.5	9.5	56	11	10	5.5	5.5	M6	22.324	400	15.16	38.56
R25-5T6-FSI	25	5	3.175	40	63	51	5.5	9.5	65	11	10	5.5	5.5	M6	22.324	480	17.73	46.27
R25-10T3-FSI	25	10	4.763	45	69	55	6.6	11	65	15	12	7.5	6.5	M6	21.134	250	15.91	32.36
R25-10T4-FSI	25	10	4.763	45	69	55	6.6	11	80	15	12	7.5	6.5	M6	21.134	330	20.38	43.15
R32-5T3-FSI	32	5	3.175	44	74	60	6.6	11	46	12	12	6	6.5	M6	29.320	330	11.17	30.81
R32-5T4-FSI	32	5	3.175	44	74	60	6.6	11	53	12	12	6	6.5	M6	29.320	420	14.31	41.08
R32-5T6-FSI	32	5	3.175	44	74	60	6.6	11	66	12	12	6	6.5	M6	29.320	630	20.27	61.62
R32-10T3-FSI	32	10	6.350	51	82	68	6.6	11	72	16	12	8	6.5	M6	26.910	350	25.39	53.27
R32-10T4-FSI	32	10	6.350	51	82	68	6.6	11	83	16	12	8	6.5	M6	26.910	480	32.52	71.02
R40-5T4-FSI	40	5	3.175	51	80	66	6.6	11	53	16	12	8	6.5	M8x1	37.324	500	15.99	52.80
R40-5T6-FSI	40	5	3.175	51	80	66	6.6	11	66	16	12	8	6.5	M8x1	37.324	740	22.65	79.19
R40-10T3-FSI	40	10	6.350	60	96	80	9.0	14	76	16	15	8	8.5	M8x1	34.910	400	29.59	70.69
R40-10T4-FSI	40	10	6.350	60	96	80	9.0	14	87	16	15	8	8.5	M8x1	34.910	510	37.89	94.26
R50-5T4-FSI	50	5	3.175	62	96	80	9.0	14	57	16	15	8	8.5	M8x1	47.324	620	17.57	67.45
R50-5T6-FSI	50	5	3.175	62	96	80	9.0	14	70	16	15	8	8.5	M8x1	47.324	910	24.90	101.2
R50-10T3-FSI	50	10	6.350	69	114	92	11	17.5	78	18	20	9	11	M8x1	44.910	500	33.97	92.56
R50-10T4-FSI	50	10	6.350	69	114	92	11	17.5	89	18	20	9	11	M8x1	44.910	630	43.50	123.4
R50-10T6-FSI	50	10	6.350	69	114	92	11	17.5	112	18	20	9	11	M8x1	44.910	940	61.65	185.1
R50-20T4-FSI	50	20	9.525	75	129	105	14	20	186	28	30	14	13	M8x1	42.466	800	93.27	239.6
R63-10T4-FSI	63	10	6.350	82	134	110	14	20	91	20	20	10	13	M8x1	57.910	790	48.60	158.6
R63-10T6-FSI	63	10	6.350	82	134	110	14	20	114	20	20	10	13	M8x1	57.910	1150	68.87	237.9
R80-10T4-FSI	80	10	6.350	99	152	127	14	20	91	20	20	10	13	M8x1	74.910	960	55.59	211.2
R80-10T6-FSI	80	10	6.350	99	152	127	14	20	114	20	20	10	13	M8x1	74.910	1400	78.79	316.8
R80-20T3-FSI	80	20	9.525	108	174	143	18	26	138	24	25	12	17.5	M8x1	72.466	950	96.63	316.2
R80-20T4-FSI	80	20	9.525	108	174	143	18	26	161	24	25	12	17.5	M8x1	72.466	1250	123.8	421.6
R100-20T4-FSI	100	20	9.525	135	194	163	18	26	161	24	30	12	17.5	M8x1	92.466	1550	135.7	531.6

ALL GROUND BALLSCREW ASSEMBLIES ARE PAIRED WITH RUN OUT REPORTS  
STANDARD RANGE OF BALLSCREW NUTS SHOWN ABOVE, SPECIALS ON REQUEST



# Full Round Flange

## Ground Ballscrews – Double Nuts



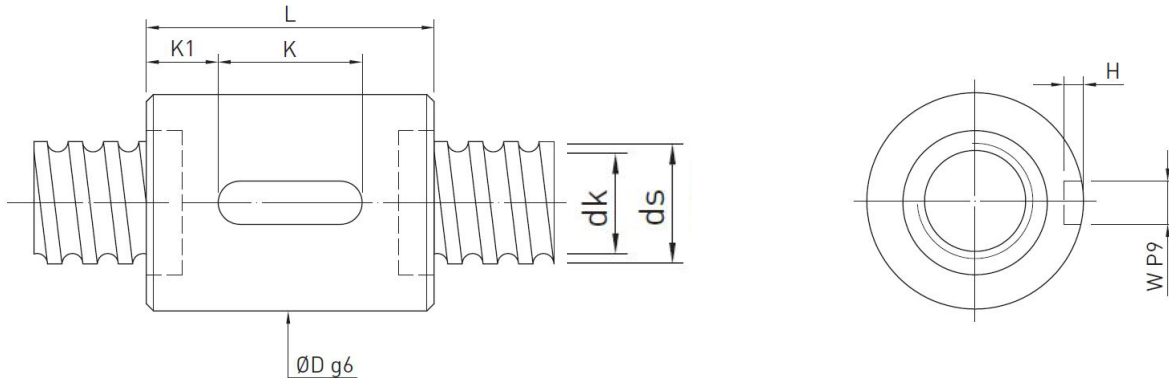
Part Number	ds	P	Ø Ball	D	D1	D2	D3	D4	L	L1	L2	L3	L4	S	dk	Rigidity (N/µm)	Dyn (kN)	Stat (kN)
R16-5T3-FDI	16	5	3.175	30	54	41	5.5	9.5	78	12	24	6	5.5	M6	13.324	200	7.31	13.31
R16-5T4-FDI	16	5	3.175	30	54	41	5.5	9.5	90	12	24	6	5.5	M6	13.324	230	9.36	17.75
R20-5T3-FDI	20	5	3.175	34	57	45	5.5	9.5	78	12	24	6	5.5	M6	17.324	390	8.52	17.67
R20-5T4-FDI	20	5	3.175	34	57	45	5.5	9.5	92	12	24	6	5.5	M6	17.324	540	10.91	23.56
R25-5T3-FDI	25	5	3.175	40	64	51	5.5	9.5	78	11	24	5.5	5.5	M6	22.324	550	9.77	23.14
R25-5T4-FDI	25	5	3.175	40	64	51	5.5	9.5	96	11	24	5.5	5.5	M6	22.324	730	12.52	30.85
R25-10T3-FDI	25	10	4.763	45	69	55	6.6	11	140	15	24	7.5	6.5	M6	21.134	490	15.91	32.36
R32-5T3-FDI	32	5	3.175	44	74	60	6.6	11	78	12	24	6	6.5	M6	29.320	640	11.17	30.81
R32-5T4-FDI	32	5	3.175	44	74	60	6.6	11	96	12	24	6	6.5	M6	29.320	820	14.31	41.08
R32-5T6-FDI	32	5	3.175	44	74	60	6.6	11	118	12	24	6	6.5	M6	29.320	1210	20.27	61.62
R32-10T3-FDI	32	10	6.350	51	82	68	6.6	11	129	16	24	8	6.5	M6	26.910	680	25.39	53.27
R32-10T4-FDI	32	10	6.350	51	82	68	6.6	11	155	16	24	8	6.5	M6	26.910	820	32.52	71.02
R40-5T4-FDI	40	5	3.175	51	80	66	6.6	11	96	16	24	8	6.5	M8x1	37.324	990	15.99	52.80
R40-5T6-FDI	40	5	3.175	51	80	66	6.6	11	122	16	24	8	6.5	M8x1	37.324	1460	22.65	79.19
R40-10T3-FDI	40	10	6.350	60	96	80	9.0	14	133	16	30	8	8.5	M8x1	34.910	760	29.59	70.69
R40-10T4-FDI	40	10	6.350	60	96	80	9.0	14	155	16	30	8	8.5	M8x1	34.910	1010	37.89	94.26
R50-5T4-FDI	50	5	3.175	62	96	80	9.0	14	96	16	30	8	8.5	M8x1	47.324	1210	17.57	67.45
R50-5T6-FDI	50	5	3.175	62	96	80	9.0	14	122	16	30	8	8.5	M8x1	47.324	1770	24.90	101.2
R50-10T3-FDI	50	10	6.350	69	114	92	11	17.5	135	18	40	9	11	M8x1	44.910	950	33.97	92.56
R50-10T4-FDI	50	10	6.350	69	114	92	11	17.5	157	18	40	9	11	M8x1	44.910	1240	43.50	123.4
R50-10T6-FDI	50	10	6.350	69	114	92	11	17.5	203	18	40	9	11	M8x1	44.910	1840	61.65	185.1
R63-10T4-FDI	63	10	6.350	82	134	110	14	20	159	20	40	10	13	M8x1	57.910	1580	48.60	158.6
R63-10T6-FDI	63	10	6.350	82	134	110	14	20	205	20	40	10	13	M8x1	57.910	2280	68.87	237.9
R80-10T4-FDI	80	10	6.350	99	152	127	14	20	172	20	40	10	13	M8x1	74.910	1900	55.59	211.2
R80-10T6-FDI	80	10	6.350	99	152	127	14	20	214	20	40	10	13	M8x1	74.910	2770	78.79	316.8
R80-20T3-FDI	80	20	9.525	108	174	143	18	26	250	24	50	12	17.5	M8x1	72.466	1890	96.63	316.2
R80-20T4-FDI	80	20	9.525	108	174	143	18	26	296	24	50	12	17.5	M8x1	72.466	2480	123.8	421.6
R100-20T4-FDI	100	20	9.525	135	194	163	18	26	296	24	60	12	17.5	M8x1	92.466	3000	135.7	531.6

ALL GROUND BALLSCREW ASSEMBLIES ARE PAIRED WITH RUN OUT REPORTS  
STANDARD RANGE OF BALLSCREW NUTS SHOWN ABOVE, SPECIALS ON REQUEST



# Cylindrical & Keyway

## Ground Ballscrews – Single Nuts



Part Number	ds	P	Ø Ball	D	L	K	W	H	K1	dk	Rigidity (N/µm)	Dyn (kN)	Stat (kN)
R16-2T4-RSI	16	2	1.500	25	25	20	3	1.8	2.5	14.652	150	1.78	3.95
R16-5T3-RSI	16	5	3.175	28	40	20	3	1.8	10	13.324	110	7.31	13.31
R16-5T4-RSI	16	5	3.175	28	46	20	3	1.8	13	13.324	120	9.36	17.75
R20-5T3-RSI	20	5	3.175	32	41	20	3	1.8	10.5	17.324	200	8.52	17.67
R20-5T4-RSI	20	5	3.175	32	48	20	3	1.8	14	17.324	270	10.91	23.56
R25-5T3-RSI	25	5	3.175	37	41	20	4	2.5	10.5	22.324	280	9.77	23.14
R25-5T4-RSI	25	5	3.175	37	48	20	4	2.5	14	22.324	2370	12.52	30.85
R32-5T3-RSI	32	5	3.175	44	41	20	4	2.5	10.5	29.324	330	11.17	30.81
R32-5T4-RSI	32	5	3.175	44	48	20	4	2.5	14	29.324	420	14.31	41.08
R32-5T6-RSI	32	5	3.175	44	61	25	4	2.5	18	29.324	630	20.27	61.62
R32-10T3-RSI	32	10	6.350	51	68	25	6	3.5	21.5	26.910	350	25.39	53.27
R32-10T4-RSI	32	10	6.350	51	79	32	6	3.5	23.5	26.910	480	32.52	71.02
R40-5T4-RSI	40	5	3.175	51	48	20	4	2.5	14	37.324	500	15.99	52.80
R40-5T6-RSI	40	5	3.175	51	61	25	4	2.5	18	37.324	740	22.65	79.19
R40-10T3-RSI	40	10	6.350	60	68	25	6	3.5	21.5	34.910	400	29.59	70.69
R40-10T4-RSI	40	10	6.350	60	79	32	6	3.5	23.5	34.910	510	37.89	94.26
R50-5T4-RSI	50	5	3.175	62	48	20	4	2.5	14	47.324	620	17.57	67.45
R50-5T6-RSI	50	5	3.175	62	61	25	4	2.5	18	47.324	910	24.90	101.2
R50-10T3-RSI	50	10	6.350	69	68	32	6	3.5	18	44.910	500	33.97	92.56
R50-10T4-RSI	50	10	6.350	69	79	32	6	3.5	23.5	44.910	630	43.50	123.4
R50-10T6-RSI	50	10	6.350	69	102	40	6	3.5	31	44.910	940	61.65	185.1
R63-6T4-RSI	63	6	3.969	78	56	25	6	3.5	15.5	59.744	750	26.74	105.4
R63-6T6-RSI	63	6	3.969	78	70	32	6	3.5	19	59.744	1130	37.04	158.1
R80-10T4-RSI	80	10	6.350	99	79	32	8	4.0	23.5	74.910	960	55.59	211.2
R80-10T6-RSI	80	10	6.350	99	102	40	8	4.0	31	74.910	1400	78.79	316.8
R80-20T3-RSI	80	20	9.525	108	126	50	10	5.0	38	72.466	950	96.63	316.2
R80-20T4-RSI	80	20	9.525	108	149	63	10	5.0	43	72.466	1250	123.8	421.6
R100-20T4-RSI	100	20	9.525	125	149	63	10	5.0	43	92.466	1550	135.7	531.6

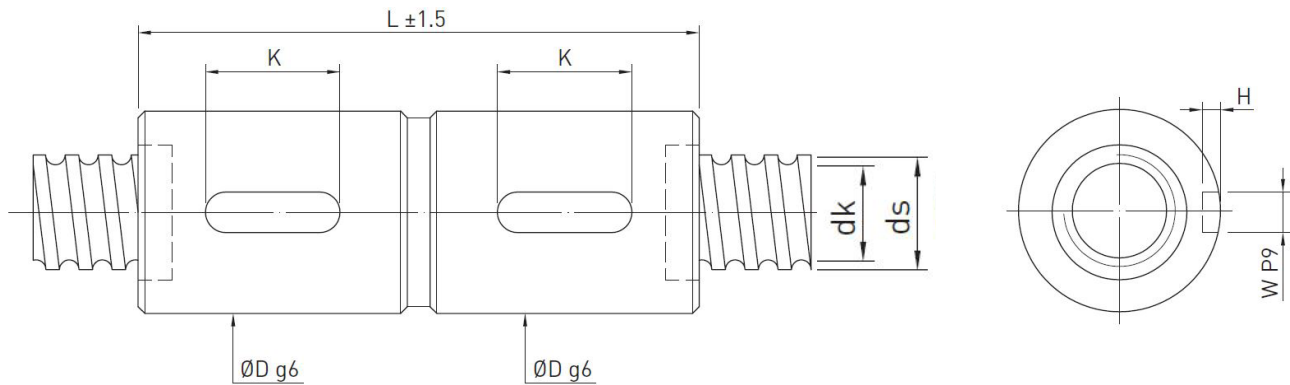
ALL GROUND BALLSCREW ASSEMBLIES ARE PAIRED WITH RUN OUT REPORTS  
STANDARD RANGE OF BALLSCREW NUTS SHOWN ABOVE, SPECIALS ON REQUEST





# Cylindrical & Keyway

## Ground Ballscrews – Double Nuts

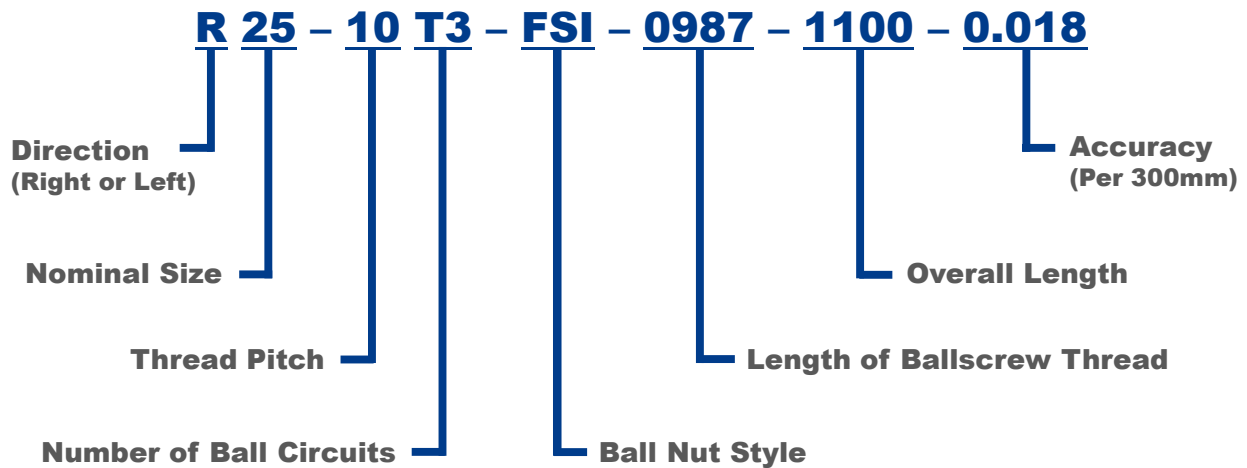


Part Number	ds	P	Ø Ball	D	L	K	W	H	dk	Rigidity (N/µm)	Dyn (kN)	Stat (kN)
R16-5T3-RDI	16	5	3.175	28	72	20	3	1.8	13.324	200	7.31	13.31
R16-5T4-RDI	16	5	3.175	28	85	20	3	1.8	13.324	230	9.36	17.75
R20-5T3-RDI	20	5	3.175	32	75	20	3	1.8	17.324	390	8.52	17.67
R20-5T4-RDI	20	5	3.175	32	85	20	3	1.8	17.324	540	10.91	23.56
R25-5T3-RDI	25	5	3.175	37	75	20	4	2.5	22.324	550	9.77	23.14
R25-5T4-RDI	25	5	3.175	37	85	20	4	2.5	22.324	730	12.52	30.85
R32-5T3-RDI	32	5	3.175	44	75	20	4	2.5	29.324	640	11.17	30.81
R32-5T4-RDI	32	5	3.175	44	85	20	4	2.5	29.324	820	14.31	41.08
R32-5T6-RDI	32	5	3.175	44	105	25	4	2.5	29.324	1210	20.27	61.62
R32-10T3-RDI	32	10	6.350	51	135	25	6	3.5	26.910	680	25.39	53.27
R32-10T4-RDI	32	10	6.350	51	155	32	6	3.5	26.910	820	32.52	71.02
R40-5T4-RDI	40	5	3.175	51	85	20	4	2.5	37.324	990	15.99	52.80
R40-5T6-RDI	40	5	3.175	51	105	25	4	2.5	37.324	1460	22.65	79.19
R40-10T3-RDI	40	10	6.350	60	135	25	6	3.5	34.910	760	29.59	70.69
R40-10T4-RDI	40	10	6.350	60	155	32	6	3.5	34.910	1010	37.89	94.26
R50-5T4-RDI	50	5	3.175	62	85	20	4	2.5	47.324	1210	17.57	67.45
R50-5T6-RDI	50	5	3.175	62	105	25	4	2.5	47.324	1770	24.90	101.2
R50-10T3-RDI	50	10	6.350	69	135	32	6	3.5	44.910	950	33.97	92.56
R50-10T4-RDI	50	10	6.350	69	155	32	6	3.5	44.910	1240	43.50	123.4
R50-10T6-RDI	50	10	6.350	69	197	40	6	3.5	44.910	1840	61.65	185.1
R63-10T4-RDI	63	10	6.350	82	160	32	8	4.0	57.910	1580	48.60	158.6
R63-10T6-RDI	63	10	6.350	82	202	40	8	4.0	57.910	2280	68.87	237.8
R63-20T4-RDI	63	20	9.525	90	260	50	8	4.0	55.466	1890	106.5	312.5
R80-10T4-RDI	80	10	6.350	99	160	32	8	4.0	74.910	1900	55.59	211.2
R80-10T6-RDI	80	10	6.350	99	202	40	8	4.0	74.910	2770	78.79	316.8
R80-20T3-RDI	80	20	9.525	108	245	50	10	5.0	72.466	1890	96.63	316.2
R80-20T4-RDI	80	20	9.525	108	289	63	10	5.0	72.466	2480	123.8	421.6
R100-20T4-RDI	100	20	9.525	125	289	63	10	5.0	92.466	3000	135.7	531.6

ALL GROUND BALLSCREW ASSEMBLIES ARE PAIRED WITH RUN OUT REPORTS  
STANDARD RANGE OF BALLSCREW NUTS SHOWN ABOVE, SPECIALS ON REQUEST



# Assembly Order Codes



Deviation Measurement	Accuracy Grade (mm)					
	T0	T1	T2	T3	T4	T5
Max Per Pitch	0.003	0.004	0.006	0.008	0.008	0.008
Max Per 300mm	0.003	0.006	0.008	0.012	0.018	0.023

Accuracy	Maximum Ballscrew Length (mm) vs Nominal Size (mm) & Accuracy Grade												
	6	8	10	12	16	20	25	32	40	50	63	80	100
T0	110	170	300	400	600	700	1000	1200	1500	1800	2000	2000	2000
T1	110	170	400	500	720	950	1300	1800	2300	3100	4000	4000	4000
T2	140	200	500	630	900	1300	1700	2200	2900	4000	5200	6300	6300
T3	170	250	500	630	1000	1400	1800	2500	3500	4500	6000	10000	10000
T4	170	250	500	630	1000	1400	1800	2500	3500	4500	6000	10000	10000
T5	170	250	500	630	1410	1700	2400	3000	3800	5000	6900	10000	10000

**GROUND BALLSCREWS ARE MADE TO ORDER SO THE DESIGN CAN BE CUSTOMISED TO SUIT YOUR SPECIFIC APPLICATION NEEDS SUCH AS BALL NUT LENGTH, SIZE AND SHAPE**

**WE CAN ALSO PRODUCE GROUND BALLSCREWS TO REPLACE WORN EXISTING ASSEMBLIES, SEND US YOUR SPECIFICATION AND / OR DRAWING FOR A FREE, NO OBLIGATION QUOTE**

ALL GROUND BALLSCREW ASSEMBLIES ARE PAIRED WITH RUN OUT REPORTS  
 STANDARD RANGE OF BALLSCREW NUTS SHOWN ABOVE, SPECIALS ON REQUEST